

AiMC-3421

Micro Computer, Intel® Core™ i7/i5/i3 CPU, H81, 4 Expansions 2PCI/2PCIe, 300W 80Plus PSU



Features

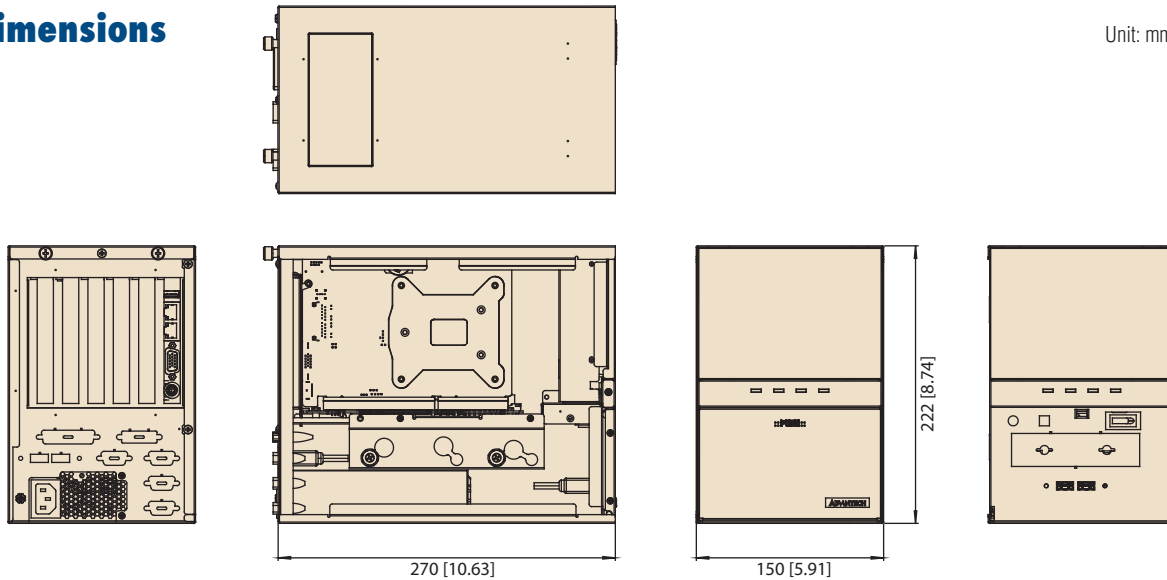
- Intel® H81 Platform
 - Intel® 4th gen Core™ i7/i5/i3 CPU (LGA1150)
 - Two PCIe (x16/x1) & two PCI Expansion Slots
- Compact & Rich I/O Configuration
 - One internal 3.5" SATA HDD bays with shock-resistant
 - Optional front removable 2.5" HDD bay
 - VGA, 2 GbE LAN, 4 USB2.0, 2 COM
 - Easy-to-maintain system fan and reusable filter
- Energy Savings
 - 300W 80Plus PSU

Specifications

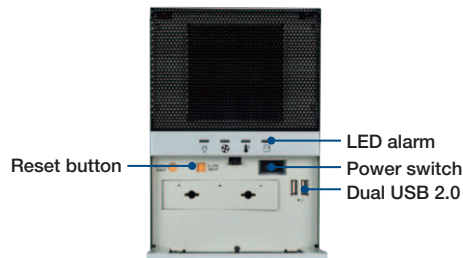
Processor System 1.5U CPU Cooler 3 Expansion slot 0 ~ 40° C	CPU	i7-4790S	i5-4590S	i3-4360					
	Core	4/8	4/4	4/4					
	Base Frequency	3.2 GHz	3.0 GHz	3.7 GHz					
	L3 Cache	8 MB	6 MB	4 MB					
	Chipset	H81							
	BIOS	AMI 128Mb SPI Flash							
Processor System 1U CPU Cooler 4 Expansion slots 0 ~ 45° C	CPU	i7-4770TE	i5-4590T	i3-4350T	i3-4340TE	G3420	G3420TE	G1820	G1820TE
	Core	4/8	4/4	2/4	2/4	2/2	2/2	2/2	2/2
	Base Frequency	2.3 GHz	2.0 GHz	3.1 GHz	2.6 GHz	3.2 GHz	2.3 GHz	2.7 GHz	2.2 GHz
	L3 Cache	8 MB	6 MB	4 MB	4 MB	3 MB	3 MB	2 MB	2 MB
	Chipset	H81							
	BIOS	AMI 128Mb SPI Flash							
Memory	Technology	Dual Channel DDR3 1066/1333/1600 MHz (Non ECC)							
	Max. Capacity	16 GB (8 GB per DIMM)							
	Socket	204-pin SO-DIMM x 2							
Graphics	Chipset Integrated	Integrated Intel HD Graphics							
	PCI Express x16	1; Full-Height: 107 mm / Length: Max. 196 mm							
Expansion slot	PCI Express x1	1; Full-Height: 107 mm / Length: Max. 196 mm							
	PCI	2; Full-Height: 107 mm / Length: Max. 196 mm; When using 2 PCI slots, only supports 1U CPU Cooler							
Ethernet	Interface	10/100/1000 Mbps							
	Controller	LAN1: Intel I217V, LAN2: Intel I211AT							
SATA	Max Data Transfer Rate	600 MB/s (SATA 3.0)							
	HDD Bay	1 internal 3.5"							
I/O Interface	Display	VGA							
	USB	4 (USB 2.0 compliant, 2 in front, 1 in rear, 1 internal type-A for software key)							
	Serial	2 RS-232							
	PS/2	1							
Watchdog Timer	Output	System reset							
	Interval	Programmable 1 ~ 255 sec/min							
Power Supply	Output Rating	AC 300W, ATX							
	Input Voltage	100 V _{AC} ~ 240 V _{AC}							
Cooling	System Fan	1 (9cm / 53 CFM)							
	Air Filter	Yes							
Miscellaneous	LED Indicators	Power, HDD, Temp, Fan							
	Control	Power on/off switch, Reset button							
Environment	Temperature	Operating 0 ~ 40° C (32 ~ 104° F)				Non-operating -20 ~ 60° C (-4 ~ 140° F)			
	Humidity	10 ~ 85% @ 40° C, non-condensing				10 ~ 95% @ 40° C, non-condensing			
	Vibration	1Grms, random, 5~500Hz, 3 axes, 1 hr/axis				2Grms, sine wave, 5~500Hz, 3 axes, 1 hr/axis			
	Shock	10G, half sine wave, 11 ms duration							
	EMC	CE/FCC, CCC, BSMI							
	Safety	UL/CB, CCC, BSMI							
	Physical Characteristics	Dimension (WxHxD)	150 x 222 x 270 mm						
	Weight	5 kg							

Dimensions

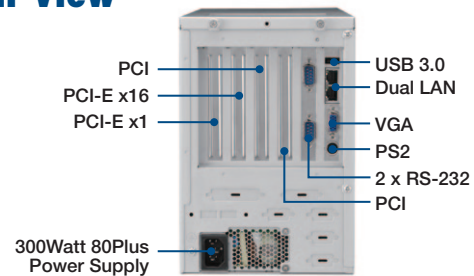
Unit: mm [inch]



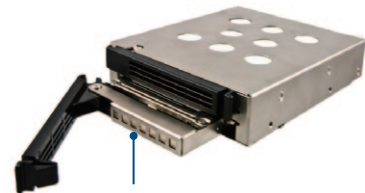
Front View



Rear View



IDT-3120E



Optional mobile rack for dual 2.5" SATA HDDs with a 3.5" drive bay occupancy

Ordering Information

Model name	Power Supply
AIMC-3421-00A1E	Micro Computer, Intel® Core™ i7/i5/i3 CPU, H81, 4 Expansions 2PCI/2PCle, 300W 80Plus PSU

Packing List

Items	Part Number	Quantity
AIMC-3421 Bare System	AIMC-3421-00A1E	1
Driver CD	2066302800	1
Four-port USB Cable	1700014398-11	1
LPT Cable	1700002223	1
MOUNTING BRACKET	1960048518N001	1
Rubber Foot	1990012452S000	4

Optional Accessories

Part Number	Description
1960053207N001	1.5U Cooler for All CPUs; Support 3 Expansion slots
1960053065N001	1U Cooler for CPU iX-XXXXTX and GXXXXXX; Support 4 Expansion slots
PCIE-1674PC-AE	4-port PCI express GbE PoE card
PCIE-1672PC-AE	2-port PCI express GbE PoE card
1700021831-01	DP to DVI-D cable w/ BKT
IDT-3120E	Removable dual 2.5" HDD tray
PCA-COM485-00A1E	4-port RS-485/422 Module by LPC
PCA-COM232-00A1E	4-port RS-232 Module by LPC
PCA-AUDIO-HDA1E	Audio extension module with HD audio interface
PCA-TPM-00A1E	Trusted platform module compliant with TCG 1.2

Note: Purchasing proprietary CPU cooler from Advantech is a must. Other brands' CPU coolers are NOT compatible.