

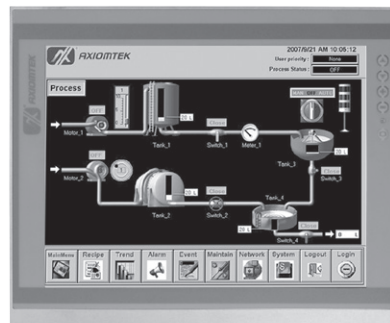
P1177E-871

17" SXGA TFT Expandable Industrial Touch Panel Computer with 3rd Gen Intel® Core™ i7/i5/i3, Celeron®, Pentium® & Xeon® Processor, 2 PCIe or 2 PCI Slots

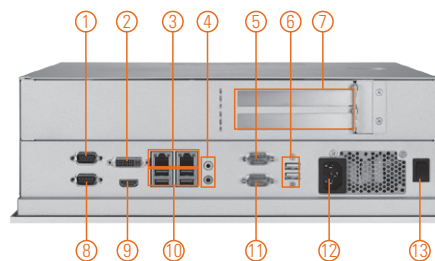


Features

- 17" SXGA TFT LCD display
- LGA1155 socket 3rd gen Intel® Core™ i7/i5/i3, Celeron®, Pentium® & Xeon® processor
- Intel® C216 chipset
- Less screw design for easy installation
- 4 USB 3.0, 2 USB 2.0 and 4 COM ports
- 2 PCIe x8 or PCI expansion slots
- Built-in speakers and optional Wi-Fi 802.11 b/g/n module
- Robust aluminum with IP65 compliant front bezel design



▲ Side view



- | | | |
|---|---------------------------------|--------------------|
| 1. COM 1 with 5V & 12V (RS-232/422/485) | 5. COM 3 with 5V & 12V (RS-232) | 10. USB 3.0 x 4 |
| 2. DVI-I | 6. USB 2.0 x 2 | 11. COM 4 (RS-232) |
| 3. Ethernet x 2 | 7. PCIe x8 x 2 or PCI x 2 | 12. AC plug |
| 4. Audio (Mic-in/Line-out) | 8. COM 2 (RS-232) | 13. Power switch |
| | 9. HDMI | |



Introduction

The P1177E-871 is a multimedia 17" touch panel PC for kiosk application. It has a fashionable mechanism design and industrial-grade material front bezel which can avoid damage from chemical corrosion. To meet the demands of multimedia application, the P1177E-871 is powered by a high performance 3rd generation Intel® Core™ i7/i5/i3, Celeron®, Pentium® & Xeon® processors with the Intel® C216 Express chipset. It features four COM ports, two Gigabit Ethernet and up to 16 GB memory of dual-channel DDR3 that delivers high computing capability for high performance-demanding applications. The industrial panel PC is most suitable for kiosk, factory and automation.

Dual Monitor Display

If larger viewing area is desired, an additional display can be connected via the system's VGA or HDMI port to help enhance worker's productivity level.

Expandable for 2 PCIe or 2 PCI

The P1177E-871 has 2 PCIe x8 or 2 PCI ports for expansion purpose. User can easily plug in standard half-size PCI or PCIe card based on any application needs.

Speaker and WLAN Antenna Supported

The P1177E-871 features built-in speakers for kiosk application to display multimedia content program. It also supports WLAN module antenna (optional) for wireless network connectivity.

Friendly Less Screw Design

The P1177E-871 is designed with ease of maintenance in mind. There are only three screws on the back chassis, so that technicians can quickly remove the system's back cover with minimum effort.

Specifications

| | | |
|-------------|---|---|
| Front Bezel | Aluminum w/ IP65/NEMA 4 rugged protection | |
| LCD Panel | Display Type | 17" SXGA TFT LCD |
| | Brightness | 350 nits |
| | Resolution | 1280 x 1024 pixels |
| | Viewing Angle | 170°/160° |
| Main System | CPU | LGA1155 socket 3rd generation Intel® Core™ i7/i5/i3, Celeron®, Pentium® & Xeon® processor |
| | Chipset | Intel® C216 |
| | System Memory | 2 x 204-pin DDR3-1333/1600 SO-DIMM, up to 16GB |
| | BIOS | AMI UEFI BIOS with OA 3.0 built |
| | Storage | 1 x 3.5" or 2 x 2.5" 7/9.5 mm SATA HDD |
| | Drive | 1 x built-in slim DVD-RW (optional) |
| | Watchdog Timer | 255 levels, 1~255 sec. |

