



FULLY INTEGRATED,
CELLULAR ENABLED
TANK LEVEL SENSOR



DIGI CONNECT[®] TANK

Monitor tank level and location remotely to optimize operations

Digi Connect Tank is a fully integrated cellular-enabled tank level sensor providing remote access to deployed tanks, totes and containers. Part of the Digi Tank solutions offer, it leverages Digi Device Cloud and integration services, enabling customers who own or manage large numbers of tanks to easily integrate into existing applications or work with 3rd party applications.

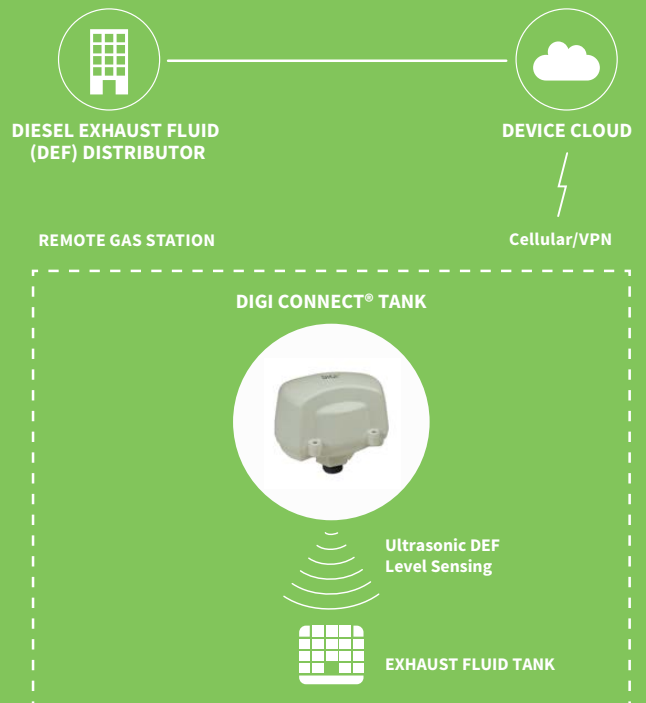
Using 3G/2G cellular technologies, Digi Connect Tank can be installed in locations where network infrastructure may not be available. Its small form factor, durable NEMA 4X enclosure, industry safety ratings and long-life battery make this product ideal for use in a broad range of tank applications.

Digi Connect Tank provides logistical and operational optimization via tank level and location data. Customers can route feet and personnel efficiently, reduce transportation and fuel costs, and increase supply chain predictability.

BENEFITS

- Remote access to tanks located virtually anywhere
- Fully integrated sensor/long life-battery/ global cellular in NEMA 4X enclosure for broad tank application support
- Tank location and level provides logistical and operational optimization
 - Reduced transportation/fuel costs via efficient routing of fleet and personnel
 - Predictable and efficient supply chain management
- Integrated ultrasonic sensor for non-contact liquid level measurements
 - Includes temp/sound speed compensation

APPLICATION EXAMPLE



TARGET APPLICATIONS



Cooking Oil
Recycling



Chemicals



Water/Waste
Water



Waste Oil



Diesel
Exhaust Fluid

SPECIFICATIONS

Digi Connect® Tank

WWAN		
CARRIERS	AT&T, International GSM Carriers*	
FREQUENCY BAND	North American Version: Dual Band UMTS/HSPA+ (850,1900 MHz) International Version: Dual Band UMTS/HSPA+ (900/2100 MHz) Dual-Band GSM (900/1800 MHz) Global Version: Five Band UMTS/HSPA +(850/800,900,1900,2100 MHz), Quad-GSM (850/900/1800/1900 MHz)	
DATA RATE	HSDPA Cat. 10 / HSUPA Cat.6 data rates DL: max. 14.4 Mbps, UL: max. 5.76 Mbps >> EDGE class 12 data rates: DL: max. 237 kbps, UL: max. 237 kbps >> GPRS class 12 data rates DL: max. 85.6 kbps, UL: max. 85.6 kbps	
ANTENNA	Built-in	
SIM SLOTS	1	
SENSOR	SHORT RANGE	MID RANGE
MODEL	Massa M-300/150	Massa M-300/95
TYPE	Ultrasonic, built-in temperature/sound speed compensation	
RANGE	Range at -20° C to +65° C: 4 inches (100 mm) to 7 feet (2.1 meters) Range at -30° C to -20° C: 4 inches (100 mm) to 5 feet (1.5 meters)	Range at -20° C to +65° C: 1 feet (0.3meters) to 13 feet (4 meters) Range at -30° C to -20° C: 1 feet (0.3meters) to 12 feet (3.7 meters)
GPS/GLONASS		
CHANNELS	56	
TRACKING SENSITIVITY	GPS: -161 dBm; Glonass: -158 dBm	
TTFF (TYPICAL)	Cold Start: 30 seconds, Warm Start: 28 seconds; Glonass: Cold Start: 32s, Warm Start 25s	
HORIZONTAL ACCURACY	GPS: 2.5m; Glonass: 4m	
ANTENNA	Built-in	
MANAGEMENT		
CONFIGURATION & MANAGEMENT	Device Cloud/Local USB to Serial CLI	
PROTOCOL	TCP	
POWER		
BATTERY	7.2V, 14.5 Ah, Lithium Thionyl Chloride, non-rechargeable, replaceable	
BATTERY LIFE	Approximately 2 years (@ 2 reads/transmits per day)	
ENVIRONMENTAL		
OPERATING TEMPERATURE	-30° C to +65° C (See range limitations in Sensor section above) -30° C to +50° C (for ATEX rated applications)	
STORAGE TEMPERATURE	-40° C to +85° C	
RELATIVE HUMIDITY	90% (Non-condensing after 90%)	
BATTERY DISCHARGE	<1%/year if stored at +30° C	
PHYSICAL		
DIMENSIONS (L X W X H)	7.0 in x 5.15 in x 6.0 in (17.8 cm x 12.9 cm x 15 cm)	
WEIGHT	1.25 lbs	
LEDS	Battery, Network	
ENCLOSURE MATERIAL	Valox (Note: Massa sensor is PVC/PPA)	
ENCLOSURE RATING	NEMA 4X	
MOUNTING	1" NPT	

SPECIFICATIONS

Digi Connect® Tank

REGULATORY APPROVALS

EMISSIONS

FCC part 15 Subpart B class B, EN55022: 2010/AC: 2011 class B, IEC5-003 Issue 5: 2012 class B

IMMUNITY

EN55024: 2010

SAFETY

UL60950-1, CAN/CSA C22.2 No. 60950-1-01, IEC 60950-1:2005 (Second Edition); Am1:2009 + Am2:2013, EN 60950-1:2006 / A11:2009 / A1:2010 / A12:2011 / A2:2013 and EN 60950-22:2006;

C1D2, ANSI/ISA 12.12.01-2013, CSA C22.2 No. 213-M1987

ATEX EN 60079-0:2012+A11:2013, EN 60079-15:2010, eII 3 G Ex nA nC IIC T6 Gc

WARRANTY

PRODUCT WARRANTY

3 years, excluding battery

PART NUMBERS

DESCRIPTION

CTANK-A511

Digi Connect Tank, Short Range Ultrasonic sensor, North America HSPA, with GPS

CTANK-A521

Digi Connect Tank, Mid Range Ultrasonic sensor, North America HSPA, with GPS

CTANK-A611

Digi Connect Tank, Short Range Ultrasonic sensor, International HSPA, with GPS

CTANK-A621

Digi Connect Tank, Mid Range Ultrasonic sensor, International HSPA, with GPS

CTANK-A711

Digi Connect Tank, Short Range Ultrasonic sensor, Global HSPA, with GPS

CTANK-A721

Digi Connect Tank, Mid Range Ultrasonic sensor, Global HSPA, with GPS

