

USB TO XBEE®
WIRELESS PAN ADAPTER
FOR LAPTOPS & PCS



XSTICK®

The XStick provides local connectivity to a wireless XBee network from a laptop or PC, enabling local commissioning of the network and its devices

Digi's XStick is an easy-to-use USB to XBee Wireless Personal Area Network (WPAN) adapter, providing local connectivity to wireless networks. Simply plug the XStick into the USB port of a laptop or PC for instant access to an XBee network and its connected devices. This compact, USB-powered wireless adapter enables local network configuration, diagnostics or device monitoring.

Two versions are available. The XStick 802.15.4 version is compatible with XBee and XBee-PRO® 802.15.4 devices and uses a fast multipoint network. The XStick ZB version is

compatible with XBee or XBee-PRO ZB devices and utilizes the ZigBee PRO Feature Set for robust mesh networks.

XStick is part of Digi's XBee family of solutions, offering users seamless wireless communication between devices, including adapters, routers and gateways.

BENEFITS

- USB to XBee Wireless Personal Area Network adapter (WPAN)
- Provides local connectivity for access, configuration and network commissioning
- Available in self-healing, self-configuring ZigBee mesh or fast 802.15.4 multipoint versions
- USB powered
- LEDs for power status and network association

RELATED PRODUCTS



XBee® ZigBee®
Module



XBee® ZigBee®
Gateway



ConnectPort®
X2



ConnectPort®
X4/X4 H

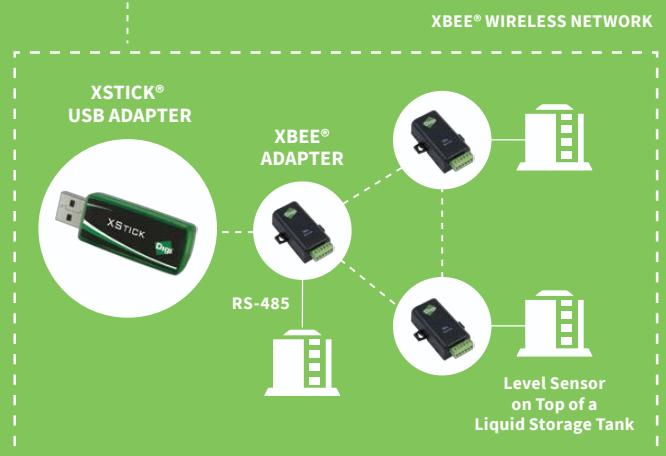


XCTU

APPLICATION EXAMPLE



Laptop



SPECIFICATIONS

XStick® ZB

XStick® 802.15.4

PERFORMANCE

INDOOR/URBAN RANGE	66 ft (20 m)	49 ft (15 m)
OUTDOOR/RF LINE-OF-SIGHT RANGE	164 ft (50 m)	131 ft (40 m)
TRANSMIT POWER OUTPUT (NOMINAL 25° C)	2.8 mW (4.5 dBm)	1 mW (0 dBm)
RF DATA RATE	250 Kbps	
SERIAL INTERFACE DATA RATE (SOFTWARE SELECTABLE)	1200 bps - 115.2 Kbps	
RECEIVER SENSITIVITY	-90 dBm	

POWER REQUIREMENTS

SUPPLY VOLTAGE	5V from USB port of PC	
TRANSMIT CURRENT	51 mA	64 mA
RECEIVE CURRENT	47 mA	64 mA
POWER-DOWN CURRENT	XStick should not be put into sleep mode	

GENERAL

FREQUENCY BAND	2.4 GHz ISM	
DIMENSIONS (L X W X H)	2.29 in x 0.80 in x 0.43 in (5.83 cm x 2.03 cm x 1.08 cm)	
OPERATING TEMPERATURE	-40° C to +85° C	
CONNECTOR	USB Type A	
ANTENNA OPTIONS	Internal only	

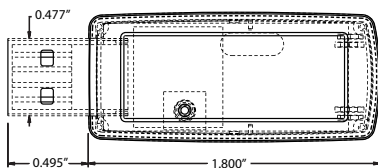
NETWORKING & SECURITY

SUPPORTED NETWORK TOPOLOGIES	ZigBee Mesh	Point-to-Point, Point-to-Multipoint, Peer-to-Peer
NUMBER OF CHANNELS (SOFTWARE SELECTABLE)	16	
ADDRESSING OPTIONS	PAN, Channel, Address	

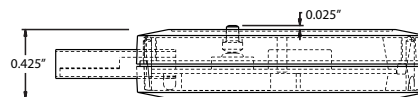
REGULATORY APPROVALS

FCC PART 15.247 (USA)	MCQ-XSTICK2	MCQ-XSTICK1
IC (CANADA)	1846A-XSTICK2	1846A-XSTICK1
ETSI (EUROPE)	Yes	Yes
TELEC (JAPAN)	Yes	No

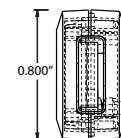
XStick - Top View



XStick - Side View



XStick - Connector



PART NUMBERS

DESCRIPTION

XU-Z11	XStick USB Adapter, ZB
XU-A11	XStick 802.15.4
XU-Z11J	XStick ZB for Japan (International)