

BVS CA-BN2-xxxxxx-(1)(2)(3)(4)(5)(6)-001 / BVS
CA-BN4-xxxxxx-(1)(2)(3)(4)(5)(6)-001

BVS CA-BN2-xxxxxx-(1)(2)(3)(4)(5)(6)-001 / BVS CA-BN4-
xxxxxx-(1)(2)(3)(4)(5)(6)-001
PCI Express industrial camera

xxxxxx Model
See table below

(1) Handling
1 = standard handling

(2) Lensholder
1 = C-Mount, Type2, with high durability and factory-set
backfocus, fixed square filter
5 = C-Mount ,Type3 (low cost, factory-set backfocus, Ø23.2
mm Filter)

(3) Filter
0 = without filter
1 = IR-Cut
2 = glass filter
More filters on request

(4) Housing
1 = standard housing, blue with logo, aluminium

(5) I/O
H = OCuLink interface, 4 opto-isolated I/Os, 2 non-isolated I/
Os

(6) Software
0 = none

Model name	Resolution	FPS*	Sensor	Pixel size	Power**
BVS CA-BN2-					
0016ZG/C	1.6 MP (1456 x 1088)	226.5/226.5	IMX273 (1/2.9", GS, CMOS)	3.45 µm	3.4 W
0032ZG/C	3.2 MP (2064 x 1544)	191.5/191.5	IMX252 (1/1.8", GS, CMOS)	3.45 µm	4.0 W
0051ZG/C	5.1 MP (2464 x 2056)	140/140	IMX250 (2/3", GS, CMOS)	3.45 µm	4.0 W
0089ZG/C	8.9 MP (4096 x 2176)	88.7/88.7	IMX255 (1", GS, CMOS)	3.45 µm	4.5 W
0124ZG/C	12.4 MP (4096 x 3008)	64.6/64.6	IMX253 (1.1", GS, CMOS)	3.45 µm	4.5 W
0246AG/C	24.6 MP (5328 x 4608)	24.1/24.1	IMX540 (1.2", GS, CMOS)	2.74 µm	4.0 W
BVS CA-BN4-					
0051BG/C	5.1 MP (2464 x 2064)	234.0/234.0	IMX537 (1/1.8", GS, CMOS)	2.74 µm	tbd W
0081ZG/C	8.1 MP (2848 x 2848)	152.5/152.5	IMX536 (2/3", GS, CMOS)	2.74 µm	tbd W
0124BG/C	12.4 MP (4128 x 3008)	104.5/104.5	IMX535 (1/1.1", GS, CMOS)	2.74 µm	tbd W
0162ZG/C	16.2 MP (5328 x 3040)	82.8/82.8	IMX532 (1.1", GS, CMOS)	2.74 µm	tbd W
0204ZG/C	20.4 MP (4512 x 4512)	66.0/66.0	IMX531 (1.1", GS, CMOS)	2.74 µm	tbd W
0246ZG/C	24.6 MP (5328 x 4608)	55.5/55.5	IMX530 (1.2", GS, CMOS)	2.74 µm	tbd W

G/C = Mono and color available

FPS = Frames per Second

GS = Global Shutter

RS = Rolling Shutter

* = Burst Mode/Streaming

** = Typical value

Basic features

Standards	EMVA 1288 GenICam
------------------	----------------------

Electrical connection

Connection 1	PCIe: OCuLink, 42-pin
Connection 2	Power/ IO: Samtec TFM-105-02-L-D-WT-Plug-in terminals, 10-pin
Short-circuit protection	no

Electrical data

Current draw peak	1.8 A
Operating voltage U_B	5...12 VDC
Ripple max. (% of U_e)	5 %

Environmental conditions

Ambient temperature	0...45 °C
IP rating	IP30
Relative humidity	20...80%
Storage temperature	-20...60 °C

Remarks

Not included in scope of delivery: Camera lens, light, connection cable, power supply

* Refer to manual for exact values

For more information about MTTF and B10d see MTTF / B10d Certificate

Indication of the MTTF- / B10d value does not represent a binding composition and/or life expectancy assurance; these are simply experiential values with no warranty implications. These declared values also do not extend the expiration period for defect claims or affect it in any way.

Functional Characteristics

Binning	Horizontal and vertical
Decimation	Horizontal and vertical
Exposure time	10 μs...20 s *
Filter	IR cut filter, other filters on request
Image formats	Mono8...Mono16 Bayer8...Bayer16 *
Trigger Modi	Free run Hardware trigger Software trigger

Interface

Digital inputs	2x PNP galvanically isolated PNP
Digital outputs	2x PNP galvanically isolated PNP
Interface	PCIe
Switching function	normally open (NO)

Material

Housing material	Aluminium, Anodized
-------------------------	---------------------

Mechanical data

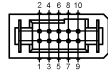
Lens mount	C-Mount, other types on request
Weight	71 g

Connector Diagram

PCIe (OCuLink)

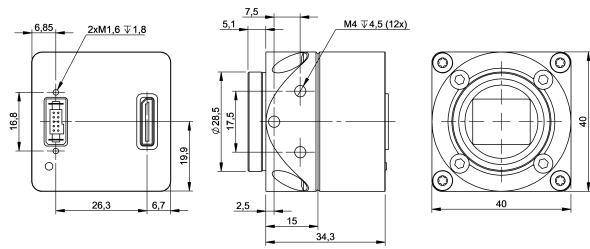


Power / IO (Samtec)



Product View

BVS CA-BN2-xxxxxx-x1x1H0 / -x5x1H0



Threads: 12 (-x1x1H0)

BVS CA-BN4-xxxxx-x5x1H0

