



Robotics As A Service

Intelligence changes Lives, Technology creates Future

Sanbot is an intelligent service robot with an open API platform, unleashing the power of Robotics and AI for retail, education, healthcare, hospitality and many other industries to deliver smarter and personalized services.



Open API



Projector



Monitoring



Object Detection



Obstacle Avoidance



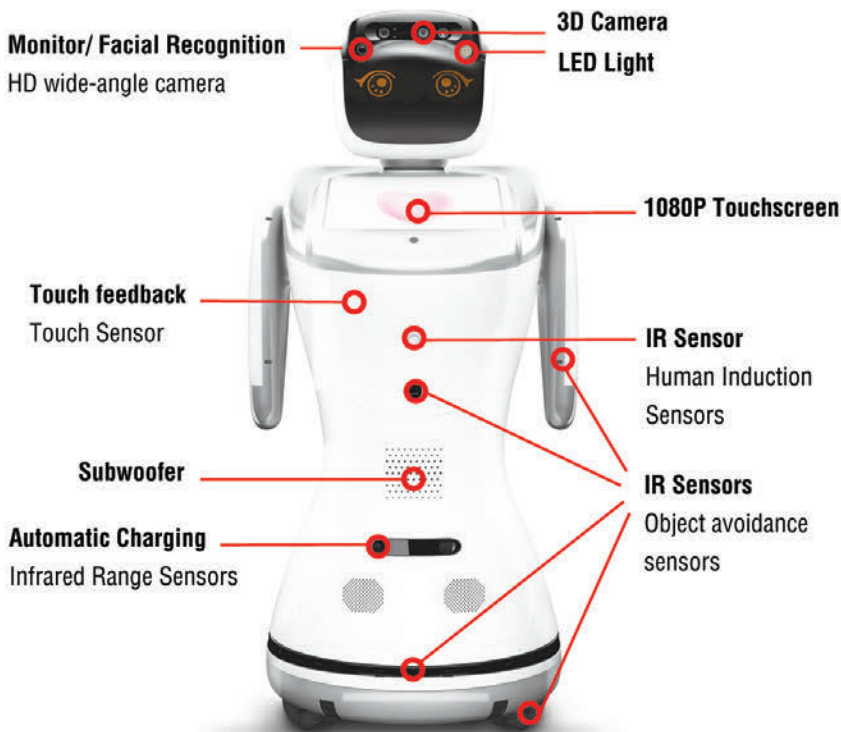
Automatic Recharging



Speech Recognition



Facial Recognition

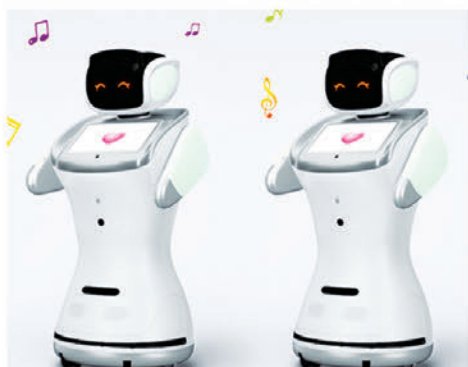
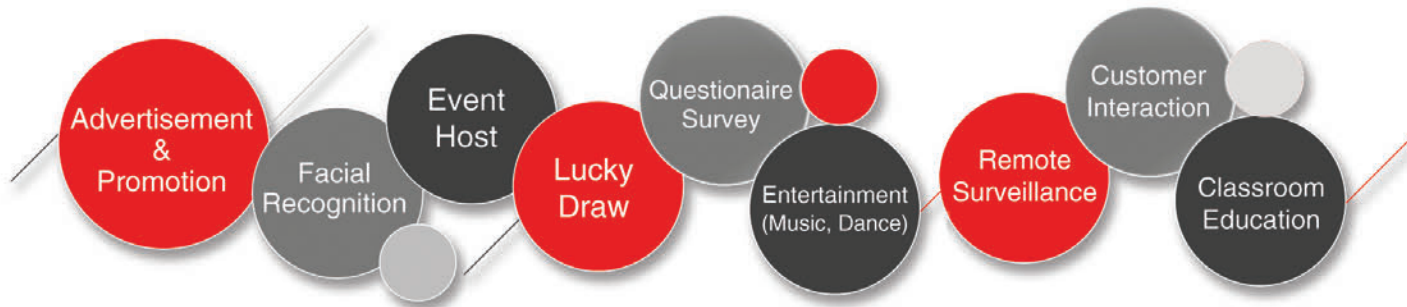


Size	92(H) x 30(D) x 40(W) cm
Weight	19 kg
Battery	Lithium battery 20Ah/300W (Runtime: 10 Hours, Standby: 20 hours)
Display	10.1" 1080p HD 10-point touch display
WIFI network	IEEE 802.11 a/b/g/n(2.4GHz/5GHz)
Wireless network	Bluetooth4.0, ZigBee
Moving speed	0.8m/s max
OS	ROS1.1 (based on Android 4.4)

Sensor

Head	Mic x7, RGB Camera x2, 3D sensor x1, Touch sensor x7
Body	Gyroscope sensor x1, Human body induction sensor x2, IR evading obstacle sensor x1, IR message receiving sensor x6, Touch sensor x4, electronic compass sensor x1
Hand	IR evading obstacle sensor x4, Touch sensor x2
Leg	IR evading obstacle sensor x10, Omni Wheel x3

What can Sanbot do?



Entertainment

Sanbot can play music, play movie, dance and greet customers



Advertising and Promotion

Sanbot can walk around and play promotional materials



Event/ Conference Host

You can mirroring sanbot screen to projector or TV via miracast

Application



Retail

Role: Promoter

Benefits: Attract more customers



Education

Role: Teaching Assistant

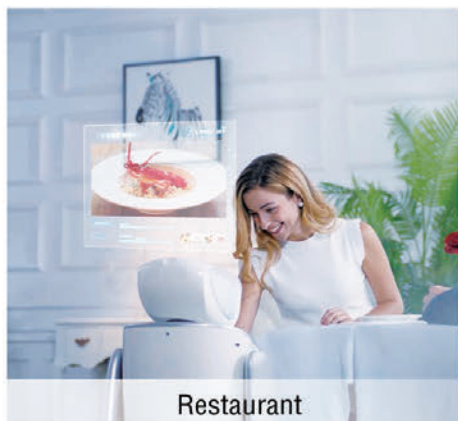
Benefits: Increase students participation



Hospitality

Role: Receptionist

Benefits: Improve customers experience



Restaurant

Role: Waiter

Benefits: Enhance customers dining experience



Healthcare

Role: Patient Companion

Benefits: Helping people take care of their loved one



Anewtech Systems

62 Ubi Road 1, #04-14

Oxley Bizhub 2, Singapore 408734

Tel: +65 6292 0801 Fax: +65 6292 0831

Email: sales@anewtech.com.sg