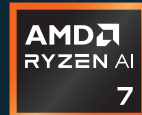
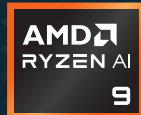


Shuttle®



XPC Nano NA10H



AFFORDABLE AI AND MULTITASKING

Powered by AMD Ryzen™ 8040 APU

The NA10H marks Shuttle's inaugural compact AMD-based mini PC, powered by AMD Ryzen™ 8040 series processors with up to AMD Radeon™ 780M Graphics. Featuring up to 8 cores and AMD Ryzen™ AI delivering 39 system TOPS and support for up to 64GB memory, the NA10H provides fast, power-efficient computing for AI workloads, content creation, and diverse AIoT applications.

AMD Ryzen™ 8040 Series Processors

- 8 cores / 16 threads, 4nm Zen 4 architecture
- Ryzen AI NPU : 16 TOPS, up to 39 total system TOPS
- Built-in AMD Radeon™ 780M graphics
- 35W-54W configurable TDP

Comprehensive Connectivity

- 8 x USB (including 2 x USB 4.0 Type-C with data transfer speeds of up to 40 Gbps)
- 2 x 2.5GbE LAN ports
- 1 x SD card reader
- Expandable Wi-Fi / Bluetooth 5.3

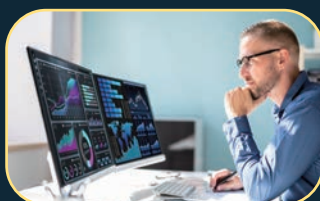
Versatile Display Output

- Support for 4 x 4K displays
- Max. 3840 x 2160 per display
- 2 x HDMI 2.0, 2 x USB 4.0 Type-C (DP)

Flexible Memory and Storage

- Up to 64GB DDR5-5600 memory support
- M.2 : NVMe SSD up to 2TB

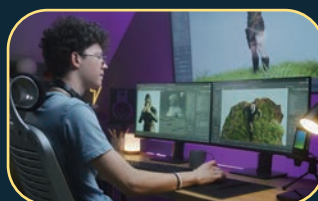
Application Scenarios



Data Center



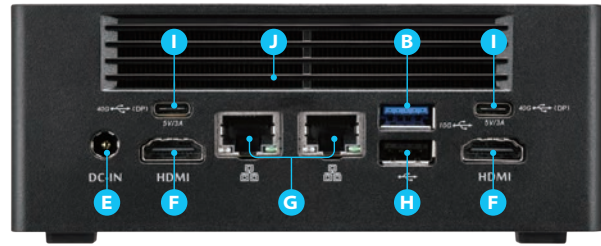
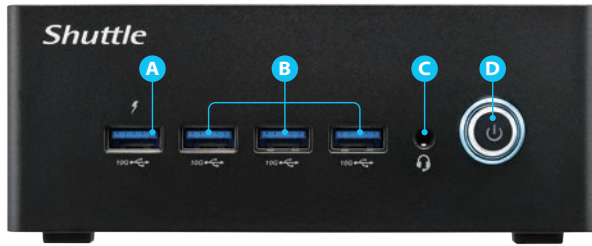
Professional Video Production



Game Development Workstation



Multimedia Teaching System



- A** USB 3.2 Gen2 Type-A port
power rating USB 3.2 : 0.9A (always on)
- B** USB 3.2 Gen2 Type-A ports
- C** Headphone / Mic in jack
- D** Power button / Power LED
- E** Power Jack (DC IN)
- F** HDMI 2.0 Ports
- G** LAN Ports
- H** USB 2.0 Port
- I** USB 4.0 Type-C Ports
(with DisplayPort / Power Delivery)
- J** Ventilation Hole

SPECIFICATIONS

		NA10H
Model		NA10H
Processor		AMD Ryzen™ R9-8945HS (TDP 45W) AMD Ryzen™ R7-8845HS (TDP 45W)
Chipset		-
Graphics		AMD Radeon™ 780M
Display Resolution Max.		HDMI 3840 x 2160@60Hz DisplayPort 3840 x 2160@60Hz
Display Output		4 Independent Displays
Video Decoder		MPEG2, VC1, VP9, H.264, H.265
Memory		2 x DDR5 5600 MHz, Max. 64GB
Storage		1 x M.2 2280, M Key PCIe 4.0 x 4 NVMe SSD, Max. 2TB
RAID		-
Expansion Slot		1 x M.2 2230, E Key
Audio		HD 2.1 channel
Video Output	HDMI Port	2
	USB 4.0 TYPE-C Port	2
	VGA Port	-
I/O Port	USB 3.2 Gen2 (Front)	4
	Headphone + Mic in combo (Front)	1
	USB 4.0 TYPE-C Port (Rear)	2
	USB 3.2 Gen2 (Rear)	1
	USB 2.0 (Rear)	1
	Line in/Line out / Mic in	-
Network	LAN	2 x RealTek 2.5G LAN
	Wifi	Optional
Dimension (L / W / H) mm		132 (W) x 143 (D) x 55 (H) mm (57.8mm include rubber)
Weight	NW (kg)	0.8
	GW (kg)	1.7
Certification		Safety : CB, UL, BSMI, CEC EMC : FCC, CE, BSMI, RCM, VCCI RoHS Compliance
Operating Temperature (°C)		0~40
Chassis		Plastic (PC+ABS)
Power Supply		120W 19V 6.32A Adapter
Operating System		Windows 11 64bit, Linux
Accessories		VESA mount (75 / 100mm), M.2 SSD Thermal kit & Thermal Pad