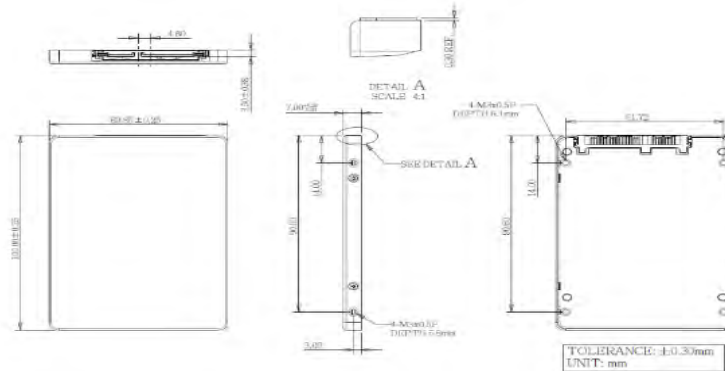


2.5" SATA SSD

31E6-P series

Drawing

* DHS25-XXXM71EXXQF (80GB ~ 640GB)



Specifications

Interface	SATA III
Flash Type	iSLC (3D TLC)
Capacity	80GB ~ 640GB
Max. Channels	4
Sequential R/W (MB/sec, max.)*	550 / 510 MB/s
4KB Random (QD32) R/W (IOPS)*	89,000 / 77,000
Max. Power Consumption	4.7 W
Thermal Sensor	✓
External DRAM Buffer	✓
AES encryption	✓
ATA Security	✓
S.M.A.R.T.	✓
Dimension (WxLxH)	69.8 X 100.0 X 6.8 mm ³ (80GB ~ 640GB)
Environment	Vibration: 20G @7~2000Hz Shock: 1500G @ 0.5ms Storage Temperature: -40°C ~ +85°C MTBF: 3 million hours
* Sequential performance based on CrystalDiskMark 5.1.2 with file size 100MB of Queue Depth 32	

Ordering Information

Operation Temp.	80GB	160GB	320GB	640GB
Standard Grade (0°C ~ +70°C)	DHS25-80GM71EC3QF	DHS25-A60M71EC3QF	DHS25-D2GM71EC1QF	DHS25-F4GM71ECAQF
Industrial Grade (-40°C ~ +85°C)	DHS25-80GM71EW3QF	DHS25-A60M71EW3QF	DHS25-D2GM71EW1QF	DHS25-F4GM71EWAQF