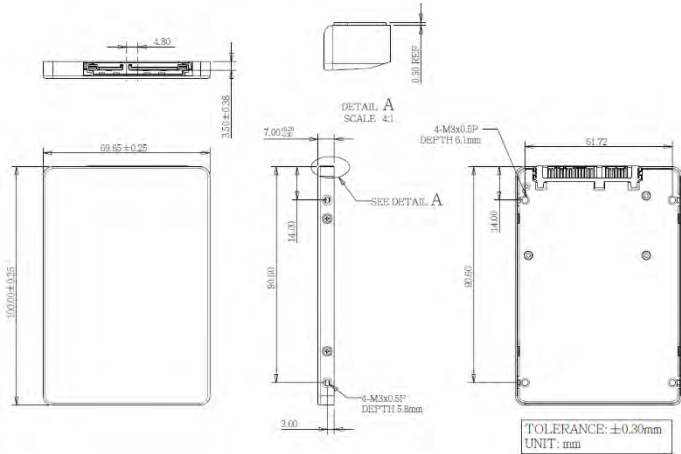


2.5" SATA SSD

3TEB series

Diagram



Specifications

Interface	SATA III
Flash Type	3D TLC
Capacity	64GB~2TB
Max. Channels	2
Sequential R/W (MB/sec, max.)*	550 / 500 MB/s
4KB Random (OD32) R/W (IOPS)**	75,000/77,000
Max. Power Consumption	1.3W
Thermal Sensor	✓
External DRAM Buffer	-
H/W Write Protect	-
ATA Security	✓
S.M.A.R.T.	✓
Dimension (WxLxH)	69.8 X 100.0 X 7.0 mm
Environment	Vibration: 20G @7~2000Hz Shock: 1500G @ 0.5ms Storage Temperature: -40°C ~ +85°C MTBF: 3 million hours
* Performance based on CystalDiskMark 8.0.1 with file size 1000MB	

Ordering Information (Please refer to TPS for detail)

Operation Temp.	64GB	128GB	256GB	512GB	1TB	2TB
Standard Grade (0°C ~ +70°C)	DES25-64G1C1KCCSF	DES25-A281C1KCCDF	DES25-B561C1KCCDF	DES25-C121C1KCCDF	DES25-01T1C1KCCDF	DES25-02T1C1KCCDF
Industrial Grade (-40°C ~ +85°C)	DES25-64G1C1KWCSF	DES25-A281C1KWCDF	DES25-B561C1KWCDF	DES25-C121C1KWCDF	DES25-01T1C1KWCDF	N/A