

BVS CA-GX0-xxxxxx-(1)(2)(3)(4)(5)(6)-001

BVS CA-GX0-xxxxxx-(1)(2)(3)(4)(5)(6)-001 /
mvBlueCOUGAR-X - Standard
GigE Vision industrial camera

xxxxxx Model
See table below

(1) Handling
1 = standard handling
2 = extended temperature range test

(2) Lensholder
1 = C-Mount, Type2, with high durability and factory-set backfocus, fixed square filter
2 = C-Mount, Type1, with adjustable backfocus, round filter with screw ring, Ø23.2 mm
4 = CS-Mount, Type1, with adjustable backfocus, round filter glued, Ø20 mm
5 = C-Mount ,Type3 (low cost, factory-set backfocus, Ø23.2 mm Filter)

(3) Filter
0 = without filter
1 = IR-Cut
2 = glass filter
More filters on request

(4) Housing
1 = standard housing, black with logo, aluminium

(5) I/O
2 = standard I/Os
6 = opto isolated IN with PLC logic level, high side switch OUT

(6) Software
0 = none

Industrial Cameras
BVS CA-GX0 - Standard



Model name	Matrix Vision model name	Resolution	FPS*	Sensor	Pixel size	Power**
BVS CA-GX0-	mvBlueCOUGAR-X					
0003SG/C	100sG/C	0.3 MP (656 x 520)	240.0/240.0	IMX991 (1/4", GS, CMOS)	5 µm	tbd W
0004FG/C	100fG/C	0.4 MP (728 x 544)	436.9/299.8	IMX287 (1/2.9", GS, CMOS)	6.9 µm	3.6 W
0013SG	101sG	1.3 MP (1296 x 1032)	125.0/88.7	IMX990 (1/2", GS, CMOS)	5 µm	2.9 W
0016ZG/C	102fG/C	1.6 MP (1456 x 1088)	126.3/74.9	IMX273 (1/2.9", GS, CMOS)	3.45 µm	3.5 W
0017ZG/C	102mG/C	1.7 MP (1600 x 1104)	115.6/67.2	IMX425 (1.1", GS, CMOS)	9 µm	4.3 W
0017BG/C	102kG/C	1.7 MP (1600 x 1104)	98.4/67.2	IMX432 (1.1", GS, CMOS)	9 µm	3.8 W
0020DG/C	102nG/C	2 MP (1632 x 1248)	88.2/58.3	IMX430 (1/1.7", GS, CMOS)	4.5 µm	3.7 W
0024AG/C	104fG/C	2.4 MP (1936 x 1216)	46.9/46.9	IMX249 (1/1.2", GS, CMOS)	5.86 µm	3.4 W
0032AG/C	104iG/C	3.2 MP (2064 x 1544)	55/37.2	IMX265 (1/1.8", GS, CMOS)	3.45 µm	3.7 W
0051PG/C	105pG/C	5.1 MP (2464 x 2056)	42.4/23.4	IMX250_POL (2/3", GS, CMOS)	3.45 µm	3.7 W
0051AG/C	105bG/C	5.1 MP (2464 x 2056)	35/23.4	IMX264 (2/3", GS, CMOS)	3.45 µm	3.7 W
0051DG/C	105dG/C	5.1 MP (2472 x 2064)	39.0/23.2	IMX547 (1/1.8", GS, CMOS)	2.74 µm	3.1 W
0064ZG/C	106nG/C	6.4 MP (3096 x 2080)	34.9/18.4	IMX178 (1/1.8", RS, CMOS)	2.4 µm	3.0 W
0071AG/C	107bG/C	7.1 MP (3216 x 2208)	26/16.7	IMX428 (1.1", GS, CMOS)	4.5 µm	3.9 W
0081UG	108uG	8.1 MP (2848 x 2848)	25.2/14.6	IMX487 (2/3", GS, CMOS)	2.74 µm	3.9 W
0081AG/C	108aG/C	8.1 MP (2856 x 2848)	25.0/14.5	IMX546 (2/3", GS, CMOS)	2.74 µm	3.1 W
0089AG/C	109bG/C	8.9 MP (4096 x 2176)	20.6/13.3	IMX267 (1", GS, CMOS)	3.45 µm	3.9 W
0124AG/C	1012bG/C	12.3 MP (4096 x 3008)	15/9.6	IMX304 (1.1", GS, CMOS)	3.45 µm	4.1 W
0124RG/C	1012rG/C	12.4 MP (4072 x 3044)	15.9/9.5	IMX226 (1/1.7", RS, CMOS)	1.85 µm	3.0 W
0124DG/C	1012dG/C	12.4 MP (4128 x 3008)	17.0/9.5	IMX545 (1/1.1", GS, CMOS)	2.74 µm	3.1 W
0205ZG/C	1020G/C	20.5 MP (5544 x 3692)	10.6/5.8	IMX183 (1", RS, CMOS)	2.4 µm	2.9 W

G/C = Mono and color available

FPS = Frames per Second

GS = Global Shutter

RS = Rolling Shutter

* = Burst Mode/Streaming

** = Typical value

Basic features

Standards	IEEE 802.3af EMVA 1288 GigE Vision GenICam
------------------	---

Electrical connection

Connection 1	GigE-Bus: RJ45-Female, 8-pin
Connection 2	Power/ IO: HIROSE-Male, 12-pin
Polarity reversal protected	yes
Short-circuit protection	yes

Electrical data

Current draw peak	1 A
Operating voltage U_b	10...28 VDC
Ripple max. (% of U_e)	5 %

Environmental conditions

Ambient temperature	0...45 °C
EN 60068-2-27, Shock	Half-sinus, 15 g, 11ms, 18 shocks
EN 60068-2-6, Vibration	10 Hz...500 Hz, 3.5 mm pp, 15g, 5h
IP rating	IP40
Relative humidity	20...80%
Storage temperature	-20...60 °C

Remarks

Not included in scope of delivery: Camera lens, filter, light, connection cable, power supply

* Refer to manual for exact values

For more information about MTTF and B10d see MTTF / B10d Certificate

Indication of the MTTF- / B10d value does not represent a binding composition and/or life expectancy assurance; these are simply experiential values with no warranty implications. These declared values also do not extend the expiration period for defect claims or affect it in any way.

Functional Characteristics

Binning	1x1...16x16 *
Data storage	64 MB
Decimation	1x1...16x16 *
Exposure time	10 µs...20 s *
Filter	IR cut filter, other filters on request
Image formats	Mono8...Mono16 Bayer8...Bayer16, RGB, YUV *
Trigger Modi	Free run Hardware trigger Software trigger

Interface

Digital inputs	2x PNP galvanically isolated
Digital outputs	4x PNP high side
Interface	Gigabit Ethernet
Switching function	normally open (NO)

Material

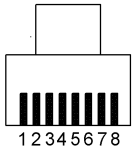
Housing material	Aluminium, Powder coated, Painted
-------------------------	--------------------------------------

Mechanical data

Lens mount	C-Mount
Weight	110 g

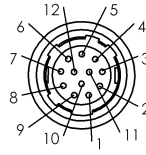
Connector Diagram

GigE-Bus (RJ45)



- PIN 1: BL_DA+
- PIN 2: BL_DA-
- PIN 3: BL_DB+
- PIN 4: BL_DC+
- PIN 5: BL_DC-
- PIN 6: BL_DB-
- PIN 7: BL_DD+
- PIN 8: BL_DD-

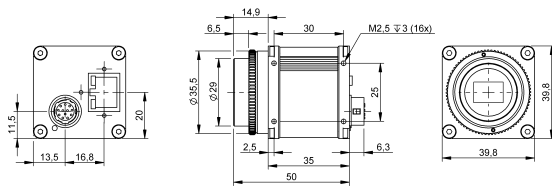
Power / IO (Hirose)



- PIN 1: GND
- PIN 2: PWR_IN
- PIN 3: DigOut3
- PIN 4: Opto DigIn0
- PIN 5: DigOut2
- PIN 6: DigOut0
- PIN 7: Opto DigIn_GND
- PIN 8: RS232 RX
- PIN 9: RS232 TX
- PIN10: Opto DigOut_PWR_IN
- PIN11: Opto DigIn1
- PIN12: Opto DigOut1

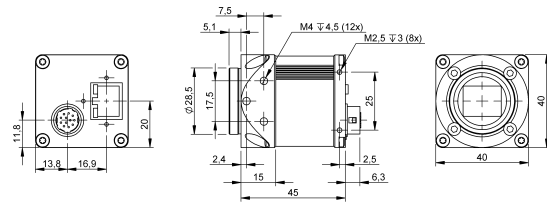
Product View

BVS CA-GX0-xxxxxx-x2x12x / -x4x12x



-x4x12x: 5 mm shorter in LEN

BVS CA-GX0-xxxxxx-x1x12x / -x5x12x



Threads: 12 (-x1x12x)